



adana

masai lodge rd. rongai



site progress

Q2 . 2022



progress summary

> ongoing works include:

- walling on lower ground, ground and first floor.
- plaster works on ground and first floor.
- formwork and steel fixing in preparation for 3rd floor casting.
- MEP first fix.
- 3no. show units on first floor.



> largely used for storage and workshop activity including carpentry, steel cutting and bending.

parking
level

- > external walling complete
- > internal walling ongoing.
- > MEP first fix ongoing

lower ground floor



- > external and internal walling ongoing.
- > plaster works ongoing.
- > MEP first fix ongoing

ground floor





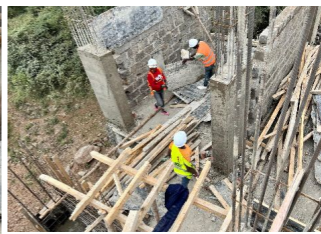
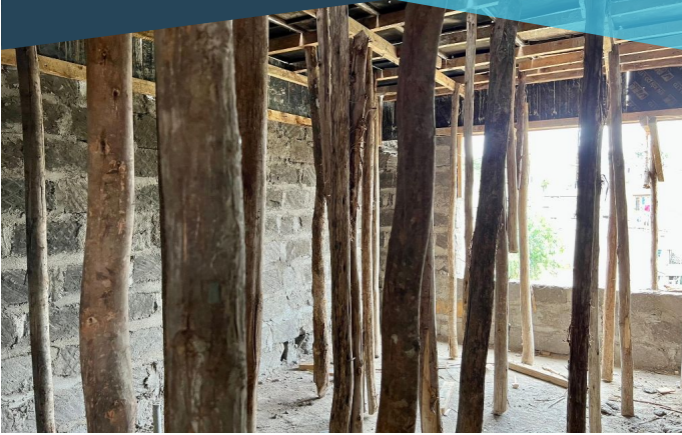
- > external and internal walling ongoing.
- > plaster works ongoing.
- > deshuttering in wing B ongoing.
- > MEP first fix ongoing.
- > show units ongoing.

first floor



- > external walling ongoing.
- > props and formwork for casting 3rd floor slab ongoing.
- > formwork to lift core and sheer walls ongoing.
- > staircase casting ongoing.

second floor



- > shuttering and steel fixing for slab casting.
- > fixing of MEP services running through the slab (pipework).

third floor





