



adana

masai lodge rd. rongai



site progress

**Q3 . 2022**



## progress summary

- > main structure at 6th floor.
- > show units complete.
- > ongoing works include:
  - internal walling on second & third floor.
  - MEP first fix on second floor.
  - plaster works on first floor wing B.
  - 6th floor formwork in preparation for steel fixing and slab casting.
  - site scaffolding.

- > show units complete in wing A.
- > plaster works ongoing in wing B.
- > preparing for floor screeding works.

## first floor



- > internal walling ongoing.
- > MEP first fix ongoing.

## second & third floor





- > floors currently under props as fifth floor slab cures.
- > fifth floor liftcore and sheer wall reinforcement complete in preparation for formwork & casting.

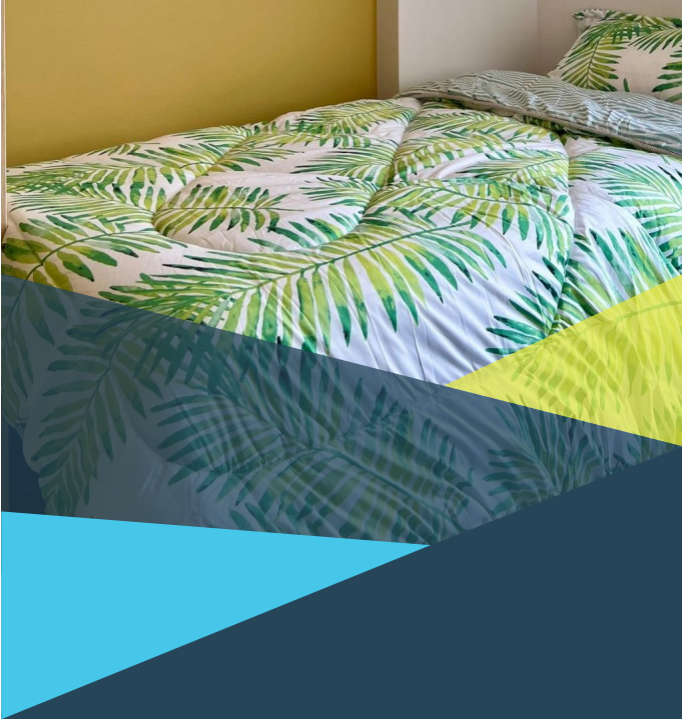
## fourth & fifth floor

- > wing A ready for slab steel fixing.
- > wing B slab & beam formwork ongoing.

## sixth floor

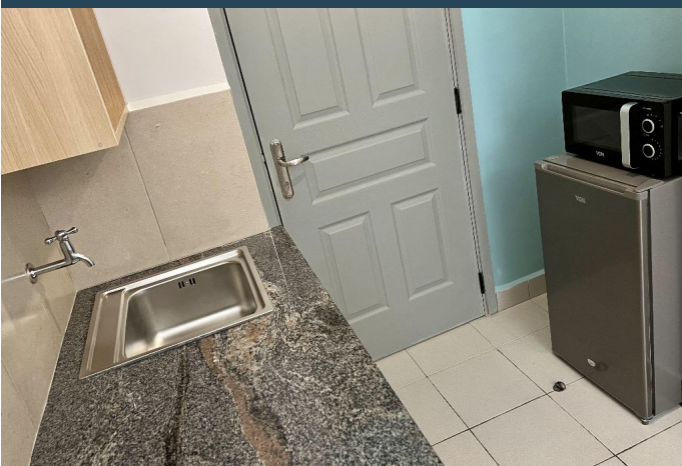


show  
**units**





two sharing **unit**

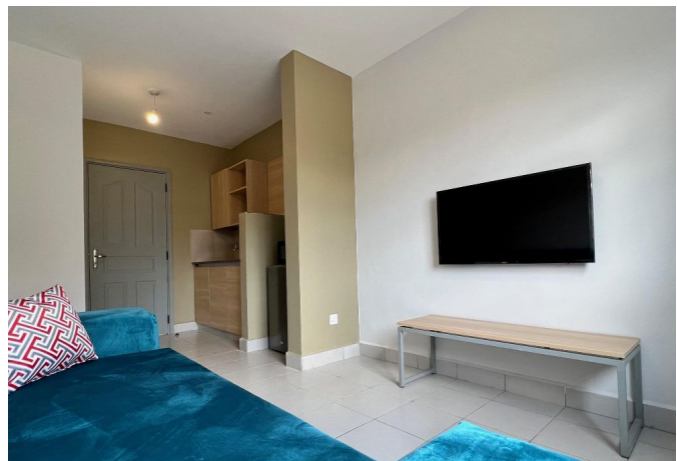




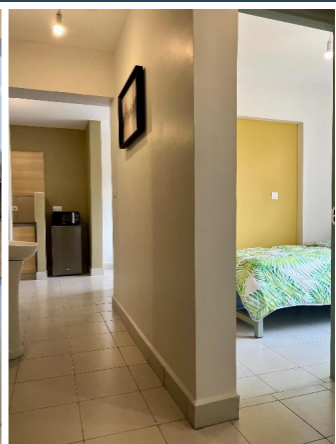


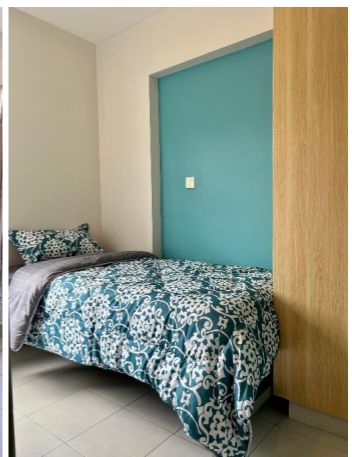
four sharing **unit**





single cluster **unit**





## Big Announcements:

1. We are creating an environment that is open to and promoting constant change, always feel free to share your **kwea experience** with us.
2. **Adana show units** are ready and open for viewing any day and time convenient to you. Let's plan your site visit today.
3. We value you greatly and as a thank you, we would like to invite you and your friends to our investor **appreciation brunch** on **Saturday the 29th of October 2022 from 0900hrs to 1200hrs at the kozi syokimau resident's lounge**. Save the date.
4. We break ground for **tamari-syokimau** (affordable 2 and 3-bedroom apartments) on **November 11th 2022**. You are welcome.



