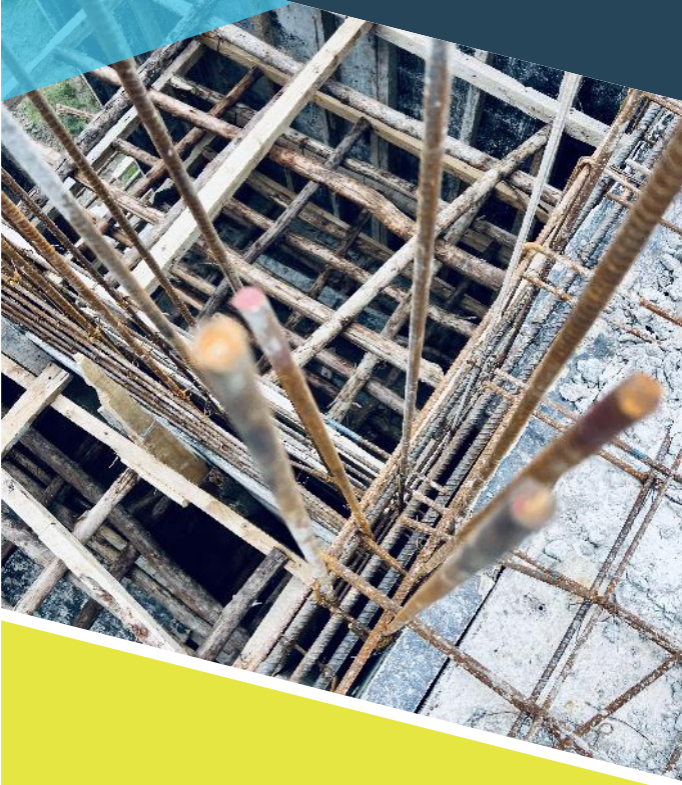




adana

masai lodge rd. rongai



site progress

Q1 . 2023



progress summary

- > concrete structure complete at 11th floor.
- > floor tiling complete on 1st and 2nd floor.
- > walling complete upto 7th floor.
- > ongoing works include:
 - walling on 8th and 9th floor.
 - plaster works on 6nd floor.
 - window frame installation at 5th floor.
 - door frame installation at 5th floor.
 - internal wall skimming on 5th floor.
 - MEP first fix on 7th floor.

- > floor tiling complete.
- > wall skimming complete.
- > window frames installation complete
- > door frames complete.

first & second floor





- > wall skimming complete.
- > window frames installation complete
- > door frames complete.

third & fourth floor





- > door frames complete.
- > window frames installation ongoing.
- > wall skimming ongoing.

fifth floor



- > MEP first fix complete.
- > plaster works ongoing.

sixth floor



- > external and internal walling complete.
- > MEP first fix ongoing.

seventh floor



- > deshuttering complete.
- > external and internal walling ongoing.

eighth & ninth **floor**



> deshuttering complete in preparation for walling..

tenth floor



> floor currently under props as rooftop slab cures

eleventh **floor**





High Five Award

We are extremely proud of these **women** and the hard work they bring to the adana construction; they give hope & encouragement to other women who have arrived at closed doors due to male dominance. Their biggest challenge they say is perception, guys think it's really 'cute' that they're into cement and shovels instead of flowers & beauty. They hold it together though, highlighting how an equal world is an enabled world & are keen to raise awareness against bias, they want to be judged based on their ability, not a preconception of what they can do based on their gender.

We look forward to continuing to open many more doors for women into the build industry and thank others for their continued collaboration in doing so.



Big announcements:

1. Adana soft opening is scheduled for **August 2023**. We will start receiving our first set of students then.
2. Here's a chance for you to book your unit at **tamari** (syokimau) before the unit prices go up. Contact Carol on **0721 560 879** for more info.
3. **Adana is 94% sold**, we have 4no. (four sharing) units and 2no. (Single cluster) units on sale. Tell a friend to tell a friend.
4. **Maasai lodge road** (The road leading to adana) is being tarmacked and is expected to be completed by June 2023.



road works ongoing | april 2023



kwea

your next chapter

p.o. box 78363-00507 . nairobi
nextgen office suites . 5th floor
office . 0701 856 881
sema@kwea.ke | www.kwea.ke

call juliet:
0701 856 881