



adana

masai lodge rd. rongai




site progress

Q4 . 2022



**happy
new
year**



wishing you and yours
a blessed and bountiful
2023

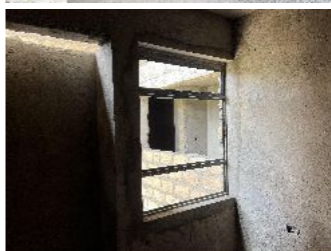


progress summary

- > main structure at 9th floor.
- > ongoing works include:
 - window frame installation at 3rd floor.
 - MEP first fix on 4th floor.
 - internal plaster works on 2nd floor.
 - internal walling on 5th and 6th floor.
 - 9th floor slab formwork in preparation for steel fixing and slab casting.

- > plaster works complete.
- > MEP first fix complete.
- > window frames installation complete

first floor



- > window frames installation ongoing.
- > internal wall plaster ongoing.
- > MEP first fix complete.

second floor





- > walling complete.
- > MEP first fix ongoing.

third & fourth
floor

> external and internal walling ongoing.

fifth & sixth floor



> de-shuttering ongoing in preparation for walling.

seventh floor



- > column casting ongoing in wing A.
- > liftcore and shear walls reinforcement complete.
- > 9th floor slab shuttering ongoing in wing B.

eighth floor



> 9th floor slab shuttering ongoing in wing B in preparation for steel fixing.

ninth floor



Big announcements:

1. Adana soft opening will be done in **August 2023**. We will start receiving our first set of students then.
2. Feel free to visit the show units at a convenient date and time. We are open seven days a week.
3. Here's a chance for you to book your unit at **tamari** (syokimau) before the unit prices go up. Contact Carol on **0721 560 879** for more info.

High Five Award

In our sites, we must get our supplies on a very regular schedule, that's why we rely on dependable suppliers to keep us on schedule and meet our targets.

At adana, this has been made possible by one of our suppliers, **George Mwaniki**, that's why our high-five award this quarter goes to him.

To just say thank you would be an understatement, but since we can't exactly give him a hug, allow us to thank George here because he has given us nothing short of flexibility and courteous service.

There have been those times, but he has been right there, helping whenever and wherever.





kwea

your next chapter

p.o. box 78363-00507 . nairobi
nextgen office suites . 5th floor
office . 0701 856 881
sema@kwea.ke | www.kwea.ke

call juliet:
0701 856 881