



tamari

syokimau



Introducing **tamari**, an affordable housing project situated in Syokimau, off Quarry Road.

It comprises of **two-bedroom** units of 64m² and **three-bedroom** units of 84m².

The development has 110 no. units tastefully curated for first time home owners.
(40 three-bed units and 70 two-bed units).

2 & 3BR units

110 units





your payment plan

Two bedroom Payment Plan

Buying price: Kes 4,900,000 **Deposit:** 250,000

Monthly payments

24	36	48	60
193,750	130,669	98,958	80,333

Three bedroom Payment Plan

Buying price: Kes 5,900,000 **Deposit:** 250,000

Monthly payments

24	36	48	60
235,417	158,600	120,200	97,200



lounge



2BR

kes 4.9m

deposit: kes 250k



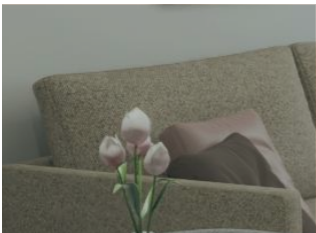
kitchen + dining



entrance lobby



bedroom



bathroom



2 bedroom unit | 64m²



lounge



dining + kitchen

3BR

kes 5.9m

deposit: kes 250k



entrance lobby



1. kitchen
2. dining
3. master suite
4. lounge
5. bathroom
6. bedroom
7. utility

3 bedroom unit | 84m²




pool deck

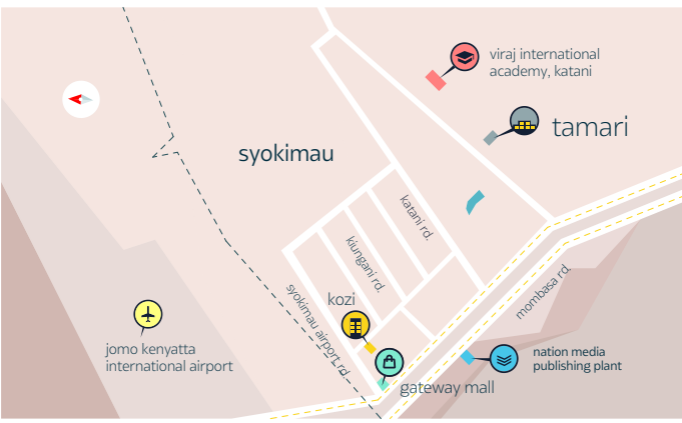


kids
play area

kids play area

amenities

- 
- dedicated parking
 - guest parking
 - kids play area
 - swimming pool + deck
 - convenience shops



your way **home**

kwea
your next chapter

p.o. box 78363-00507 . nairobi
nextgen office suites . 5th floor
sema@kwea.ke | www.kwea.ke

call juliet:
0701 856 881